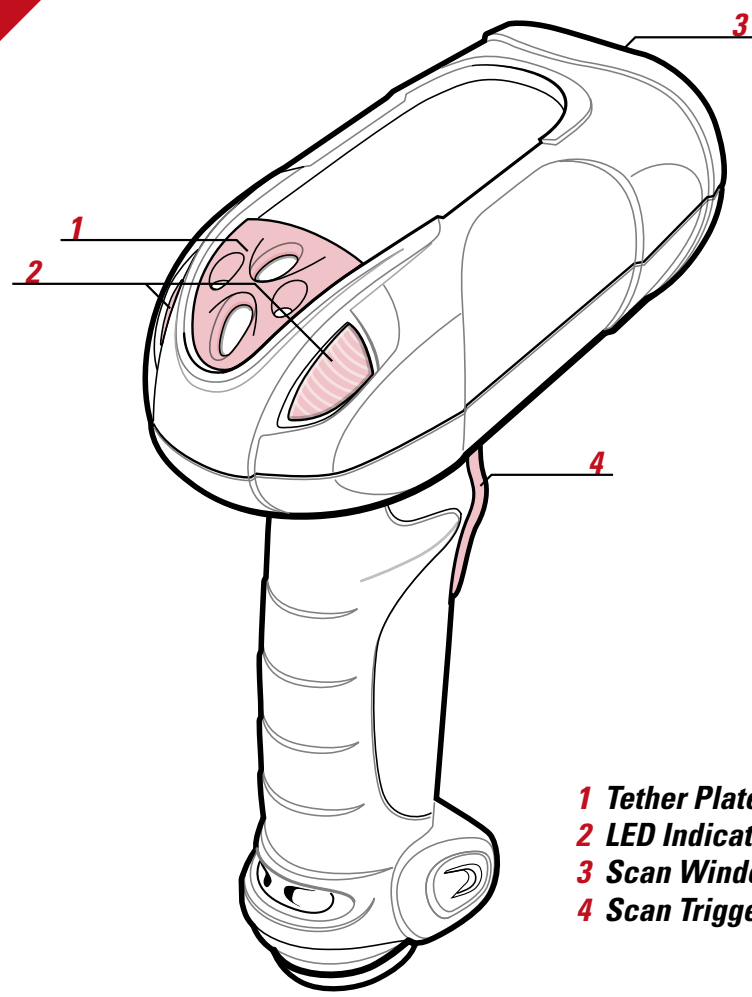
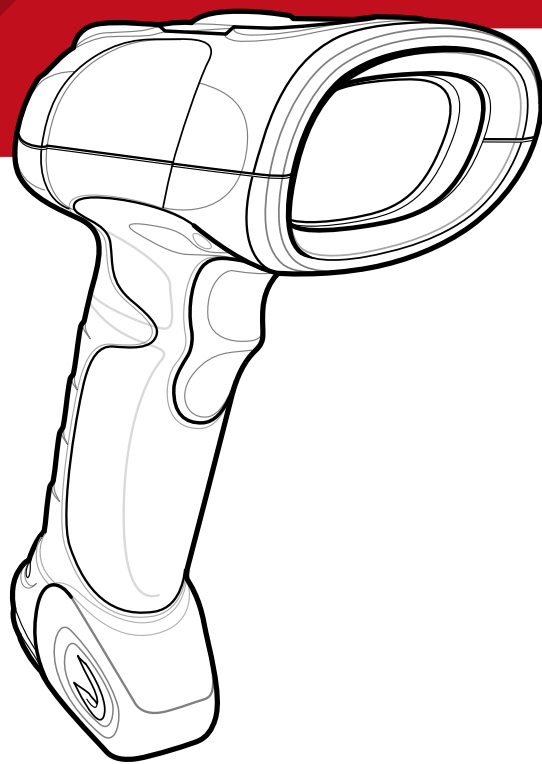


LS/DS 3408 Quick Start Guide

<http://www.symbol.com/barcode>

See Product Reference Guide for more information

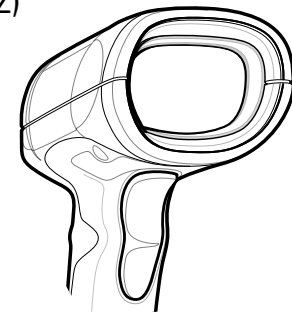
POST IN WORK AREA



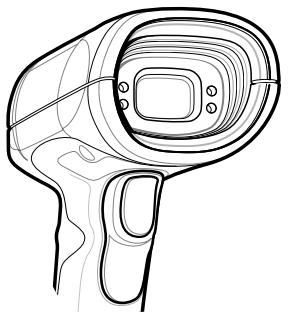
- 1 Tether Plate
- 2 LED Indicators
- 3 Scan Window
- 4 Scan Trigger

Variants

Laser Scanner (ER, FZ)

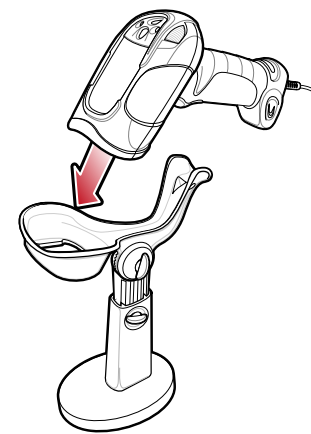


Digital Scanner (DS)

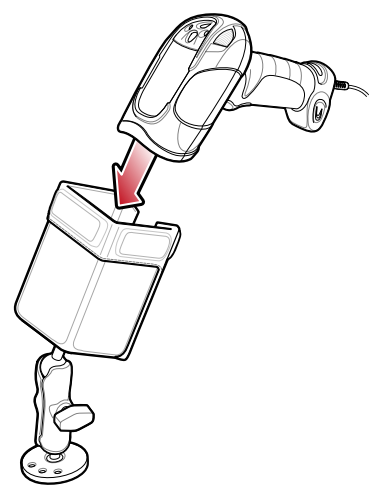


Accessories

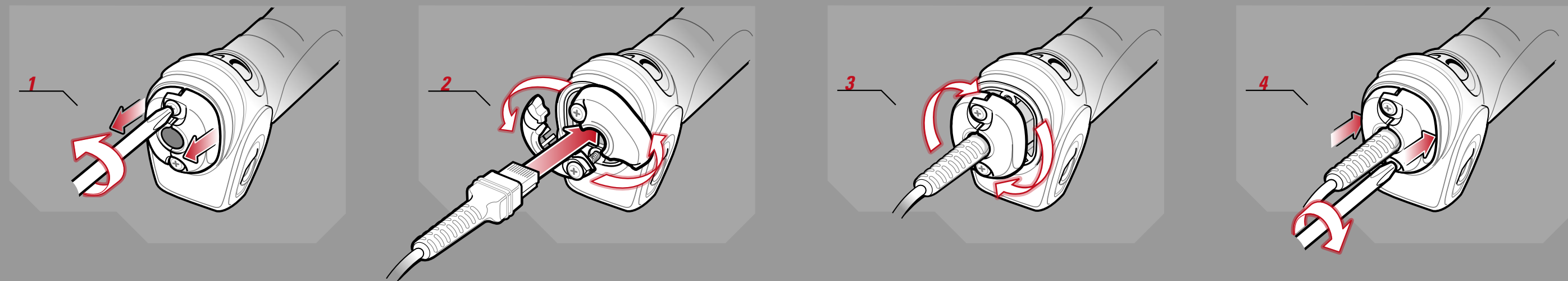
IntelliStand



Forklift Holder



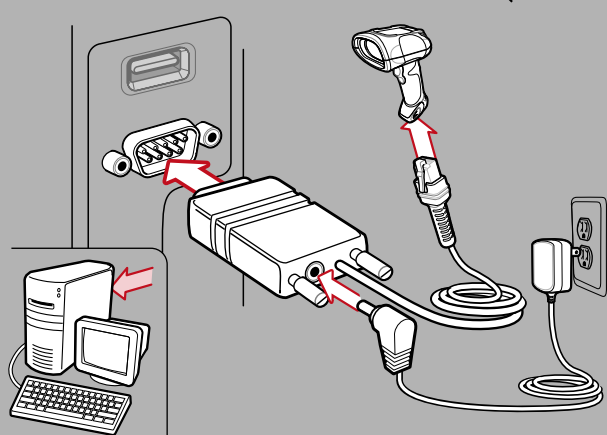
Cord Attachment



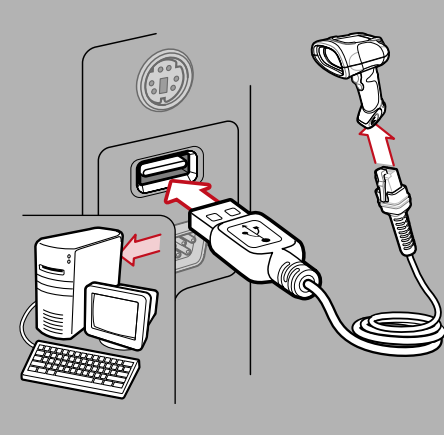
Host Interfaces

NOTE: Cables may vary depending on configuration

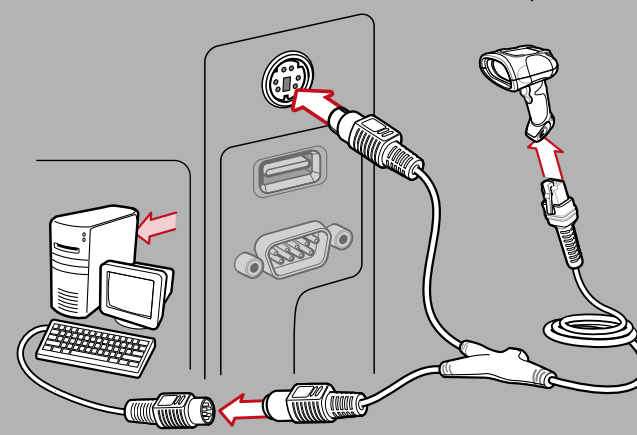
RS-232



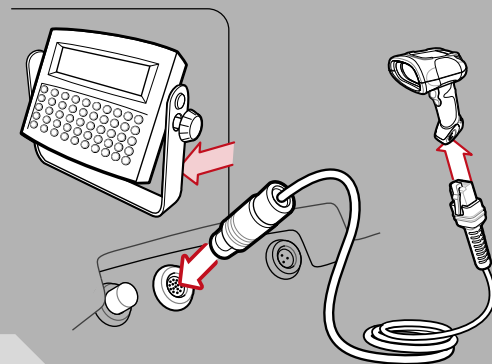
USB



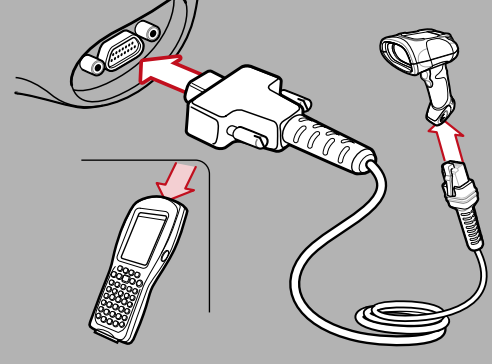
Keyboard Wedge



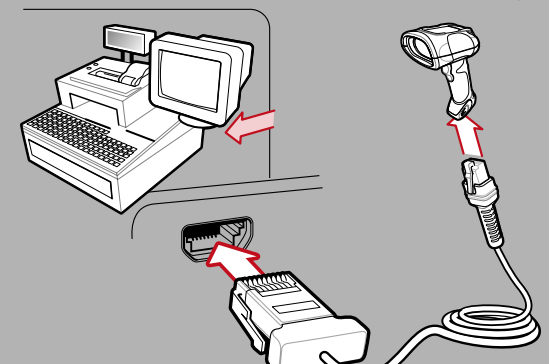
Scanner Emulation



Wand Emulation



IBM 46XX



Troubleshooting

Scanner not working

No power to scanner

Check system power; ensure power supply, if required, is connected

Incorrect interface cable used

Ensure that correct interface cable is used

Interface/power cables are loose

Check for loose cable connections

Scanner not decoding bar code

Scanner not programmed for bar code type

Ensure scanner is programmed to read type of bar code being scanned

Bar code unreadable

Ensure bar code is not defaced; try scanning test bar code of same bar code type

Distance between scanner and bar code incorrect

Move scanner closer to or further from bar code

Scanner decoding bar code, but data not transmitting to host

Scanner not programmed for correct host interface

Check scanner host parameters or edit options

Interface cable is loose

Check for loose cable connections

Scanned data incorrectly displayed on host

Scanner not programmed for correct host interface

Check scanner host parameters or edit options

LS/DS 3408 Programming Bar Codes

Set Defaults



SET DEFAULTS

IBM 46XX Host Types



PORT 5B

Wand Emulation Host Types



SYMBOL WAND

USB Host Types



HID KEYBOARD EMULATION



PORT 9B



ENABLE CONVERT TO CODE 39



IBM HAND-HELD USB

Keyboard Wedge Host Types



IBM PC/AT and IBM PC COMPATIBLE



DISABLE CONVERT TO CODE 39

RS-232 Host Types



STANDARD RS-232



NIXDORF RS-232 MODE B

Carriage Return/Line Feed



SCAN OPTIONS



ICL RS-232



FUJITSU RS-232



<DATA>-<SUFFIX>



NIXDORF RS-232 MODE A



OPOS/JPOS



ENTER

